

# ES Series Electrical Splice Kits

Absolute Protection for Any Splice (up to 600V)  
In Wet or Damp Environments

Version June 2018



URASEAL, INC.

One Washington Street  
Suite 2156

Dover, NH 03820

Phone: 800-749-2788

Fax: 603-749-5594

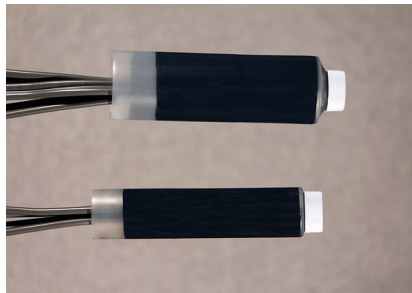
Web: [www.uraseal.com](http://www.uraseal.com)



Certificate No. C2018-01847



Uruseal's ES Series "Shake N' Seal" Kits are specifically designed for electrical applications. The "Shake N' Seal" kit is suitable for direct burial applications or equivalent by providing a **permanent water tight seal**. "Shake N' Seal" protects your splice from moisture and voltage leaks to ground and helps to eliminate cable deterioration and other related problems that can lead to open circuits and cable failure. The "Shake N' Seal" kit **replaces the sheath integrity** with a permanent seal around the splice or damaged cable. It can be used for adding a length of wire to a run or building a branch splice. For best results, use any UL approved barrel type connector for through splice applications and any UL approved wire nut for butt splice configurations.



- Submersible in Water
- Immediate Burial
- No Mess / Quick Cure
- Permanent Seal in Less than 4 Minutes!

ES Shake N' Seal Series kits are designed to **quickly and permanently encapsulate** 18 to 1 gauge multi-conductor wire splices and single service conductors up to 250 mcm and up to 600V. They are the perfect **protection in wet or damp areas** because they provide a **100% water tight seal**. "Shake N' Seal" kits are safe and easy to use and do not require the use of a torch or flame. This proven technology has been used in similar sealing applications for over 30 years without failure.



ES200SV

Please contact Uruseal, Inc. Quality Dept. for assistance and recommendations on specifications for this product.

**Uraseal**®  
CONNECTION  
PROTECTION

Made in USA

# ES Series Electrical Splice Kits

Version June 2018

## PRODUCT SELECTION GUIDE

	ES137S	ES200S	ES200SV	ES200SV	ES1150
Wire Type	Butt Splice Configuration Number of Conductors (max)			Through Splice Number of Conductors (max)	
18-16	10	20	14	14	-
14-12	6	12	9	9	-
10	4	8	6	6	-
8	3	6	4	4	4
6	2	2	2	2	3
4	2	2	2	2	2
3	2	2	2	2	2
2	1	2	2	2	2
1	1	2	2	2	2
1/0	-	-	-	-	2
2/0	-	-	-	-	2
3/0	-	-	-	-	2
4/0	-	-	-	-	2

### Excellent for Splicing Wires:

- Around swimming pools
- For irrigation system controls
- For golf course water controls
- Around water treatment plants
- In RV parks for splicing
- For outdoor lighting

Part Number	Kit Description
<b>ES137S</b>	This kit has the same electrical characteristics as the ES200S but is smaller in size. It is rated for applications up to 600 volts.
<b>ES200S</b>	This kit is perfect for butt and branch splice applications up to 600 volts. Best if used with wire nut connectors. It is rated for applications up to 600 volts.
<b>ES200SV</b>	This kit is perfect for small hard-to-splice areas. The clamshell-like outer closure just snaps into place over the splice. It is versatile and can be used for either a butt, branch, or through-splice application up to 600 volts with either a barrel or wire nut type connector.
<b>ES1150</b>	This kit may be used with a range of cable sizes from 18—4/0. It is recommended for single service conductors that utilize barrel type connectors in a through splice configuration up to 600 volts.



One Washington Street  
Suite 2156  
Dover, NH 03820

Phone: 800-749-2788

Fax: 603-749-5594

Web: [www.uraseal.com](http://www.uraseal.com)